

## Answers: 6.1.2.14 Lab - Device Manager in Windows 7 and Vista

### Introduction

In this lab, you will open Device Manager to display devices listed on your computer. You will also display the monitor settings.

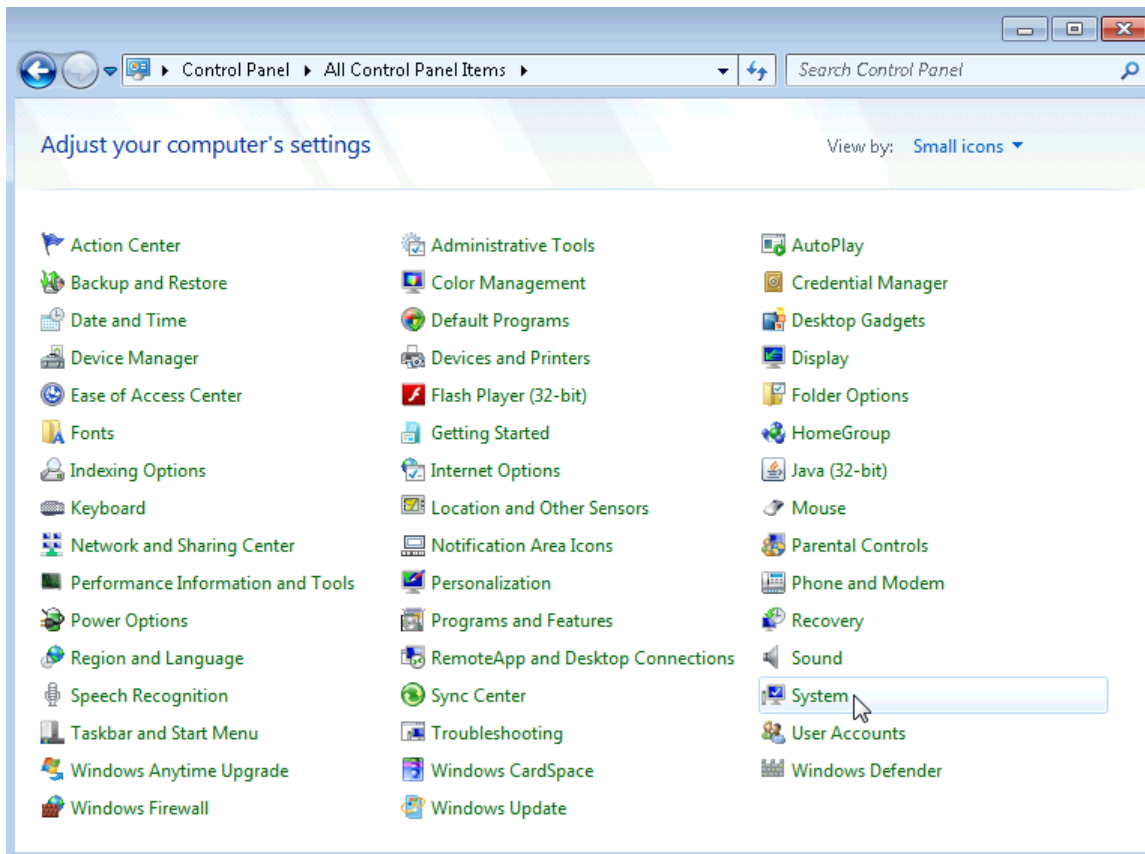
### Recommended Equipment

The following equipment is required for this exercise:

- A computer running Windows 7 or Vista

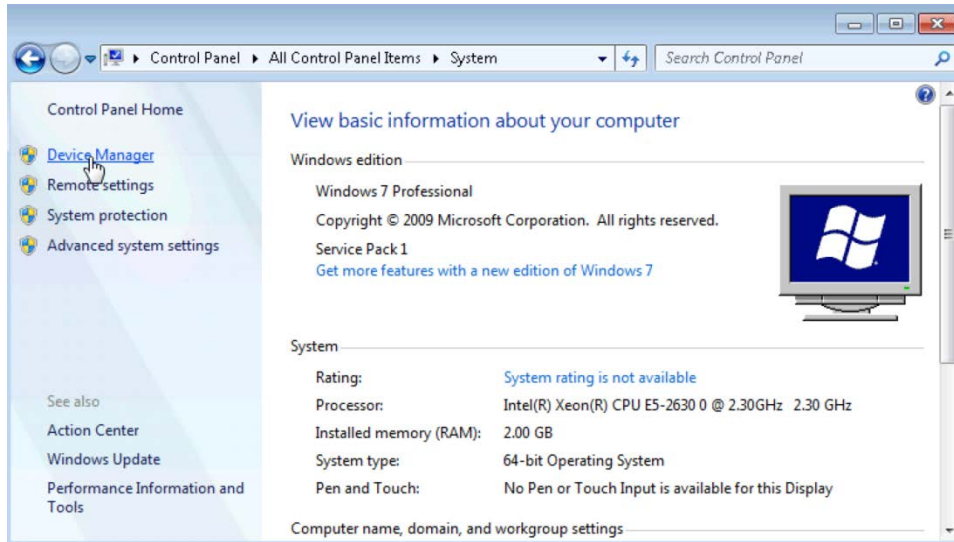
### Step 1: Open Device Manager.

- Log on to the computer as an administrator.
- Click **Control Panel > System**.

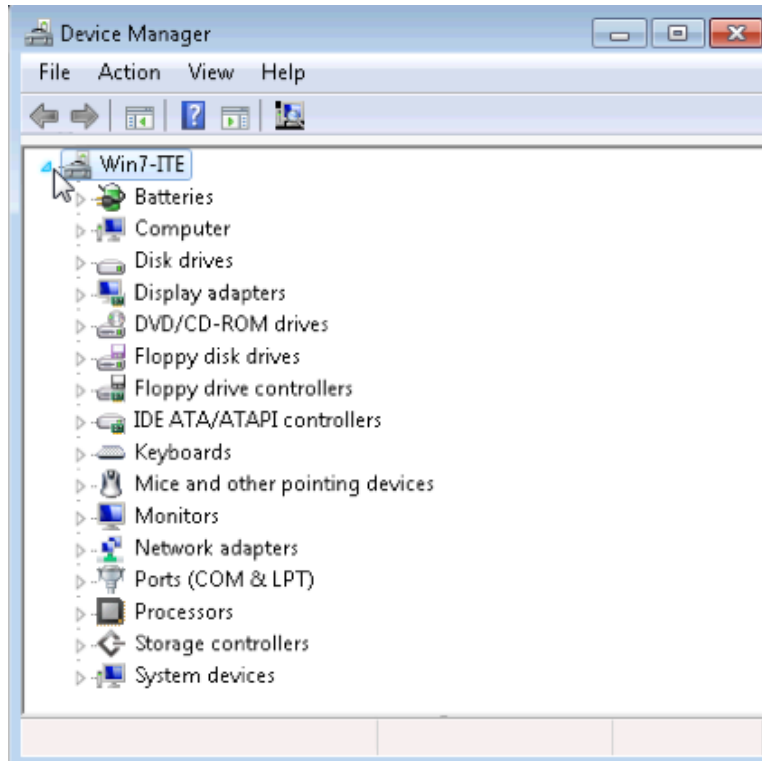


## Lab – Device Manager in Window 7 and Vista

- c. In the **System** window, click **Device Manager**.



- d. The **Device Manager** window opens.



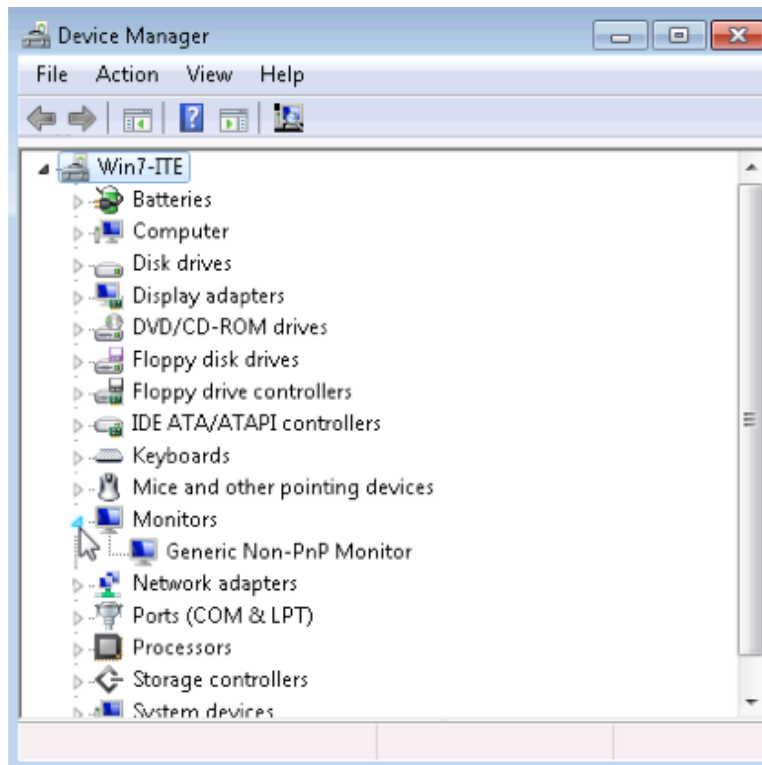
What information is listed in the Device Manager window? Why would you use it?

### Step 2: Display the monitor settings on your computer.

As an administrator, there are times when you will need to resolve monitor issues on a computer. Device Manager makes it easy to locate and install new drivers for your devices. You will use Device Manager to review the device driver information for your computer's monitor, and to review driver options available to you.

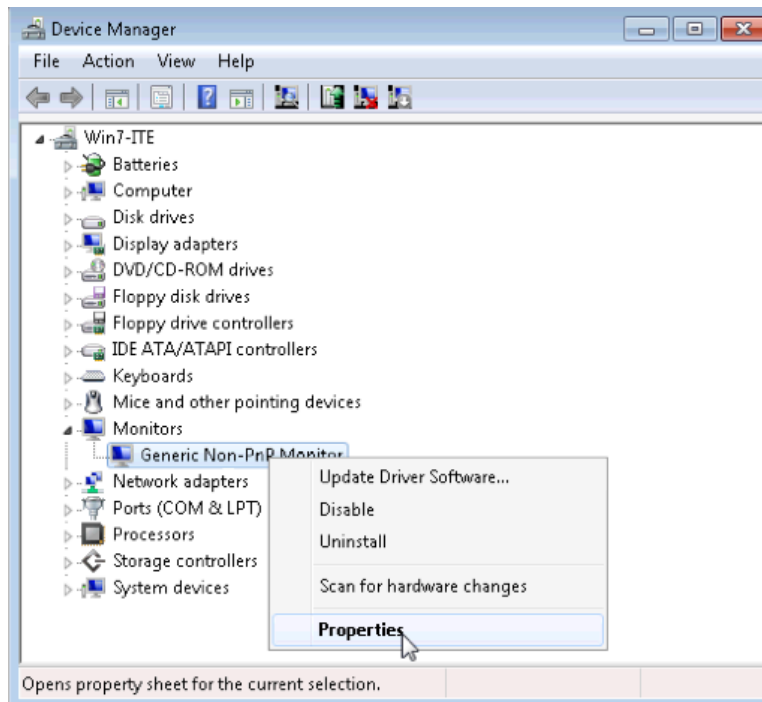
**Note:** Check with your instructor before making any device changes on the computer.

- a. Click the arrow to the left of **Monitors**.

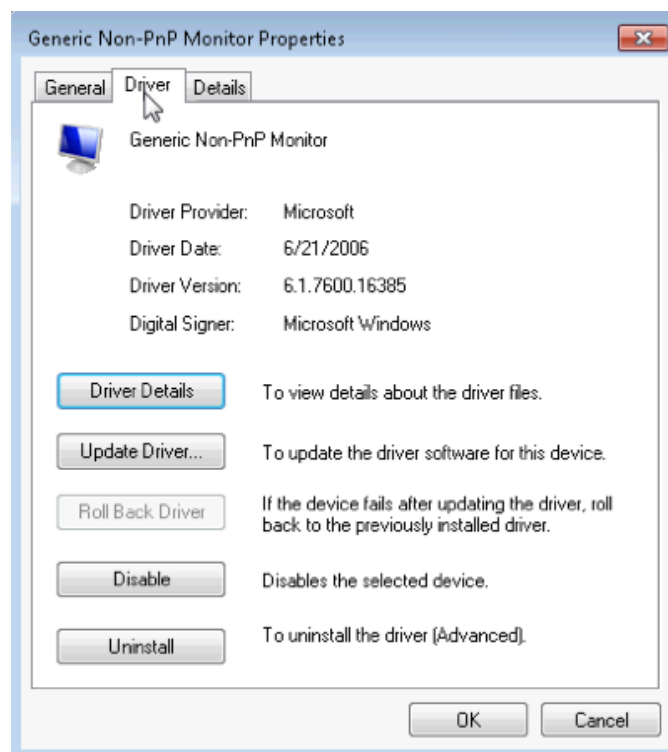


## Lab – Device Manager in Window 7 and Vista

- b. Right-click the **Monitor** device, **Generic Non-PnP Monitor** in the example, and select **Properties** from the dropdown menu.

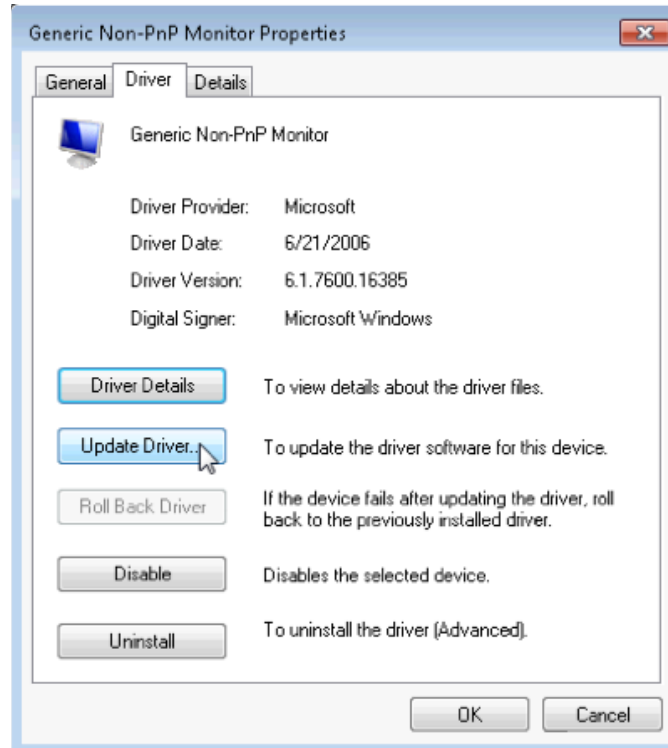


- c. The **Generic Non-PnP Monitor Properties** window opens. Select the **Driver** tab. This tab displays the software driver information that is currently installed for this monitor.



What additional information does Driver Details provide?

- d. Click **Update Driver**.



What two options do you have for updating the driver?

- e. From the **Update Driver Software** window, click **Cancel** to return to the **Monitor Properties** window. What does the Roll Back Driver button do? Why is it grayed out in the example?
- f. Close all open windows.